



MONTHLY MEMBERSHIP PROGRESS REPORT

District 323 B

Results as of: 5/31/2017

GMT: KAMLESH JAIN

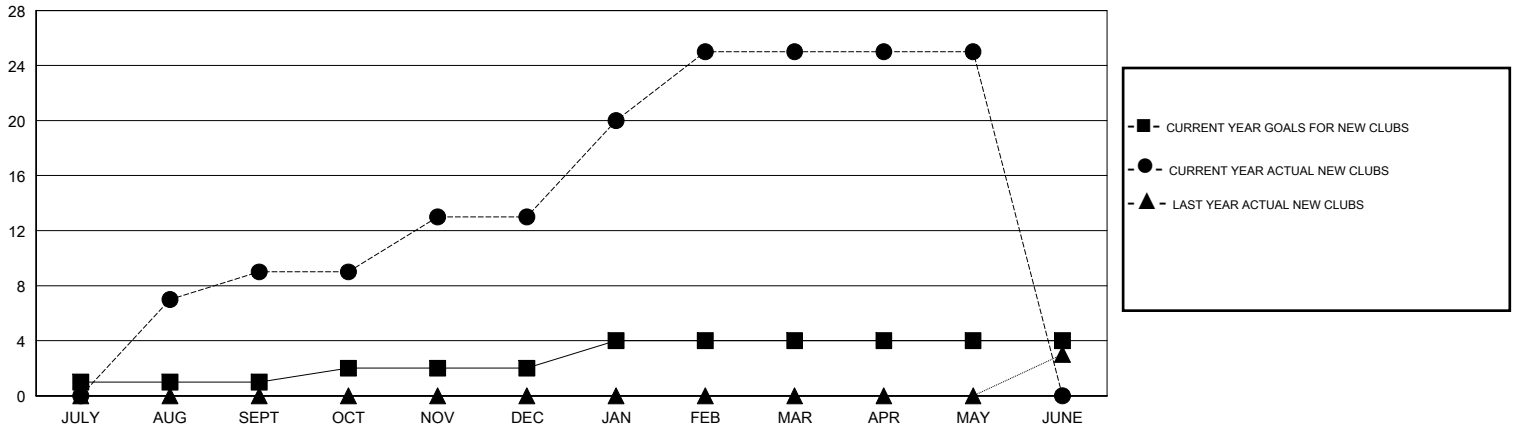
LOCATION INDIA

GMT CA

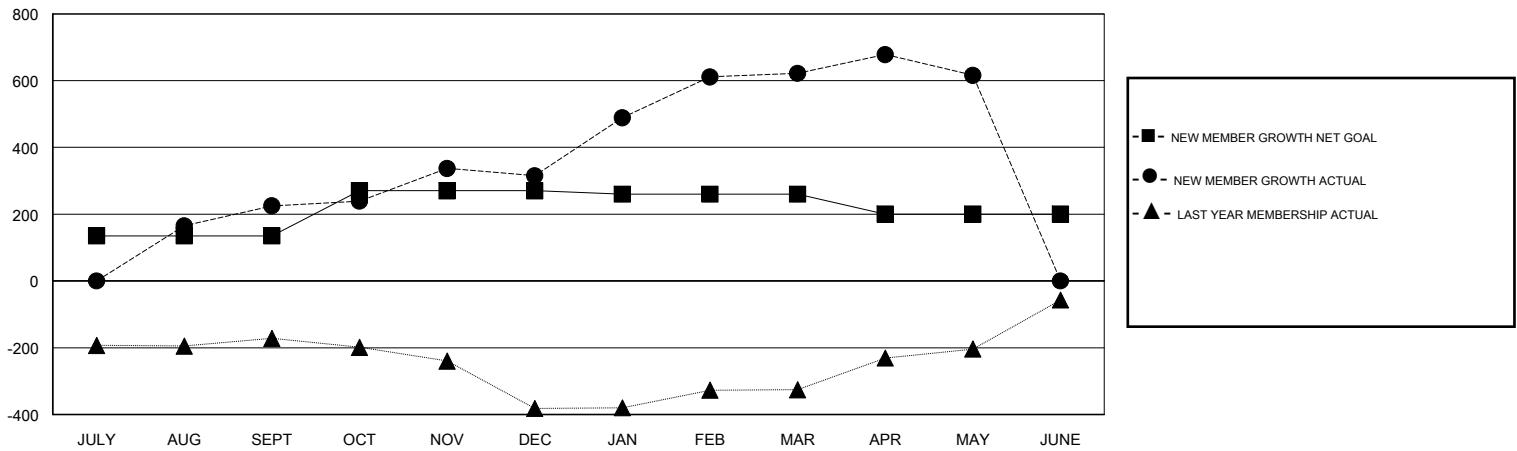
Clubs			
RESULTS FOR 2016-2017			
QUARTER	NEW CLUB GOAL	NEW CLUBS	DROPPED CLUBS
JULY/AUG/SEPT	1	9	0
OCT/NOV/DEC	1	4	0
JAN/FEB/MAR	2	12	0
APR/MAY/JUNE	0	0	0

Members			
RESULTS FOR 2016-2017			
QUARTER	NEW MEMBER GROWTH NET GOAL (not reinstated or transfers)	NEW MEMBER GROWTH ACTUAL (not reinstated or transfers)	DROPPED MEMBERS ACTUAL (including transfers)
JULY/AUG/SEPT	135	386	161
OCT/NOV/DEC	135	190	100
JAN/FEB/MAR	-10	370	63
APR/MAY/JUNE	-60	86	92

GOALS AND ACTUAL NEW CLUBS CUMULATIVE



GOALS AND ACTUAL MEMBERS CUMULATIVE



DROPPED CLUBS: 0	84 CLUBS OF 103 ADDED 1 OR MORE NEW MEMBERS	GENDER DISTRIBUTION
		MALE 3,917 (68.24%)
		FEMALE 1,823 (31.76%)
DROPPED MEMBERS	CLICK HERE FOR CUMULATIVE MEMBERSHIP DATA	TOTAL FAMILY UNIT MEMBERS 3,529
DECEASED 28		FAMILY MEMBERS PAYING HALF DUES 2,467
CLUB CANCELLED 0		
OTHER 388		
TOTAL 416		